

L - 15 Single Actuation Fitting Instructions (New)

Shortening

Maximum length 1600mm
Minimum length *235mm



Tools required to cut seal down to door size.



Measure and mark the aluminium section to door size only at opposite end to actuator (single actuation models only).



Pull seal profile back 50mm beyond mark and carefully push internal section back into housing ready to cut .



Cut both internal and external aluminium sections after clamping in vice (do not over-tighten).



Carefully remove burrs with file.



Ensure that internal and external sections can move easily.



Carefully push seal profile into grooves of internal section by squeezing and replace into housing.



Cut seal profile with sharp knife or scissors allowing additional length for gap between door and frame (see reverse side for details). Test the seal to ensure smooth operation.



Test unit is working

After completion of cutting L-15/30 seal to door size - Follow fitting instructions overleaf to install into door leaf.

Most seals can be reduced by 125mm - *235mm cannot be reduced in size.

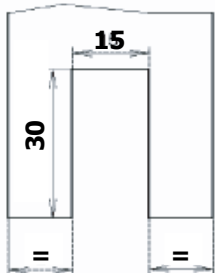
Standard sizes available are : 583mm, 708mm, 833mm, 958mm, 1083mm, 1208mm.

Other sizes are available to special order.

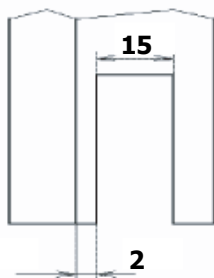
Fitting

L- 15/30 Single Actuation (WS)

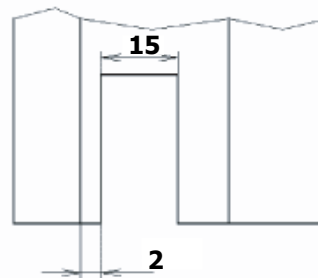
Typical position of groove for single doors



Typical position of groove for rebated doors



Typical position of groove for double rebated doors

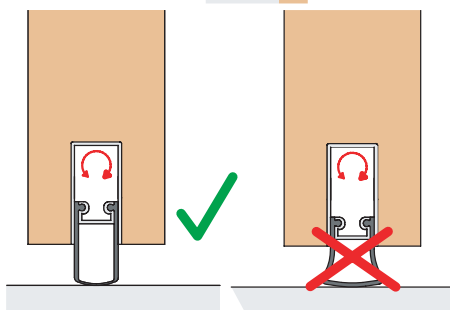
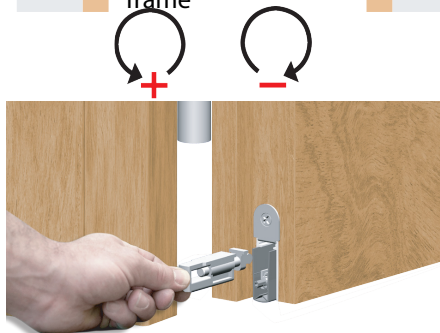
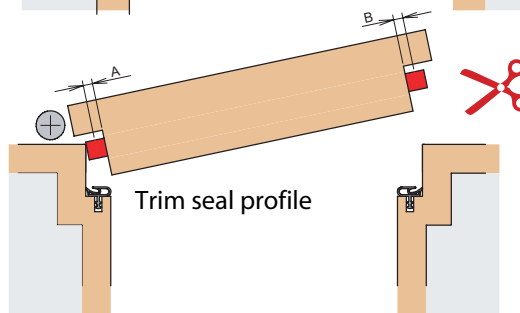
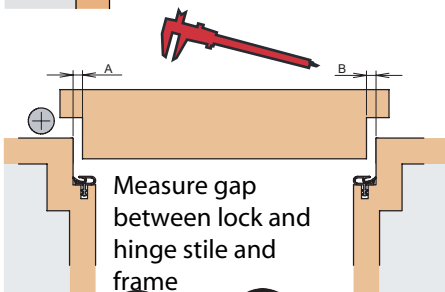
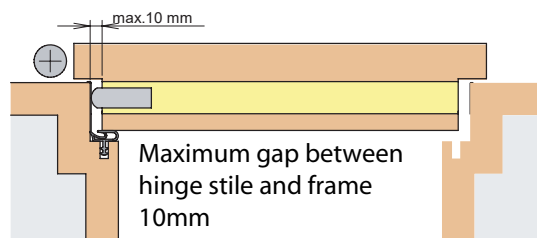
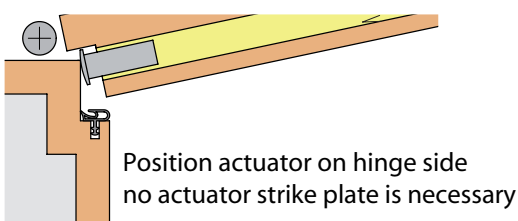


All dimensions are in mm.



Suspend seal into the groove using the plates and screw provided

Positioning and adjustment of seal



Carefully pull the actuator assembly from the seal and adjust the threaded component to adjust the amount of seal profile extending below the door. When correctly adjusted the seal profile should be as shown above right